

TRIPLE MERGER



2334 & 2340

2334 & 2340 | TRIPLE MERGERS

The Oxbo 2334 and 2340 triple mergers deliver the ultimate in productivity with the ability to merge up to 40 feet of crop into consistent windrows. Oxbo mergers set the standard in forage and windrow quality.





OXBO 2334 & 2340

DELIVERING THE HIGHEST QUALITY FORAGE

Oxbo mergers have been the leaders in the forage industry for years. The 2334 and 2340 deliver productivity and forage quality with pickup widths of 34 and 40 feet.

Unstoppable PowerMerge Technology

For 20 years, Oxbo has made a commitment to designing mergers that deliver the highest quality forage. The new PowerMerge technology on the 2334 and 2340 delivers increased merging speed in heavy crops while building dense, smooth windrows across crop types.

PowerMerge combines Oxbo's newest cam technology with positive belt drive motors and the belt width and angle to carry crop to the back of the belt. The result: **tight crop flow and maximum leaf retention**. All without the use of belt tensioners.

Both the Oxbo 2334 and 2340 were designed to deliver **better windrows** and **better feed quality**.



Smooth windrows translate into **reduced chopper fuel consumption, faster chopper speeds**, and even knife wear.



Oxbo customers average **30% lower cost per acre** when running an Oxbo merger.



PowerMerge technology translates into **the fastest merging speeds**, even in high tonnage crops.



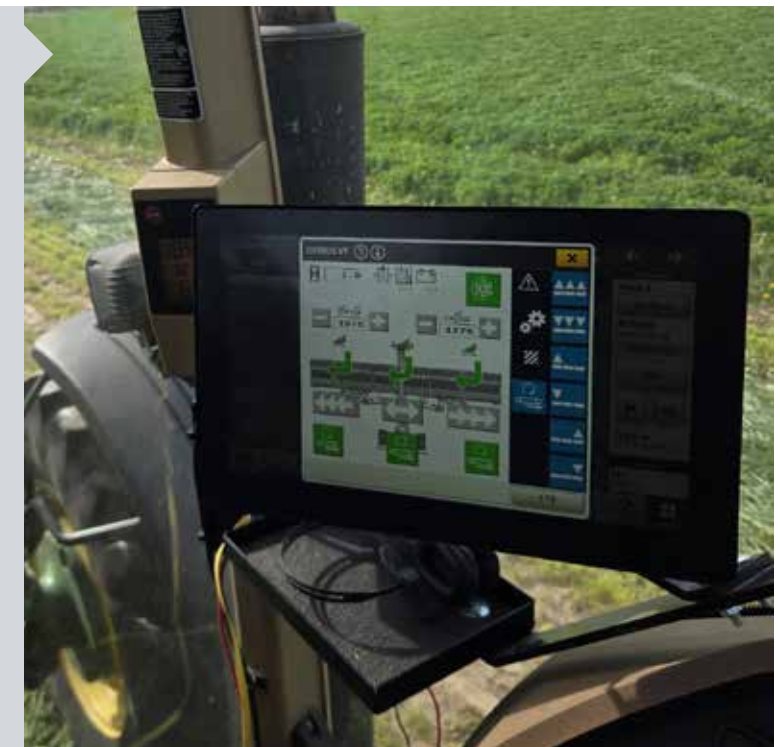
Merging has proved to deliver the **highest feed quality** through lower ash content.

✓ EFFICIENT OPERATION

Oxbo mergers are ISOBUS compatible providing enhanced operator control and diagnostic information. The optional control box is available for non-ISOBUS tractors or those who prefer basic controls.

ISOBUS enhanced operator control and diagnostic information includes:

- Hour counter when merger pickups are on
- Low tractor oil pressure
- High oil temperature
- High and low tractor supply voltage
- Belts on and direction of travel
- Float pressure control from tractor cab
- Double tap all heads up and down for headland turns
- AUX-N ISOBUS programable functions
- Merger functions can be mapped to tractor's programable buttons



✓ BUILT FOR PRODUCTIVITY

Across crop types, small grains, alfalfa or grass, Oxbo triple mergers deliver **lower ash content and higher feed quality**.





OXBO 2334 & 2340

✓ **STEERING SYSTEM**

Completely redesigned mechanical steering system with heavier components, combined with wide 480/55R22.5 tires allow for faster road travel, better handling and faster merging with less field compaction.

The control unit is sealed and is also moisture and weather resistant.



✓ **BACKED BY SUPERIOR SERVICE**

Oxbo designs every merger for reliable performance, year after year. But, we also know customers need reliable support. That's why Oxbo mergers are backed by local parts and service through a dealer network and supported by best-in-class factory service.

Together, Oxbo and Oxbo dealers work to provide the kind of service that makes you want to stay an Oxbo customer, for life.



LONG, DEPENDABLE LIFE

- Oxbo mergers were designed to perform, season after season
- Heavy duty lift arms allow for rapid fold and unfold capabilities to compliment the hydraulic float system for smooth ground following



STANDARD AUTO LUBE SYSTEM

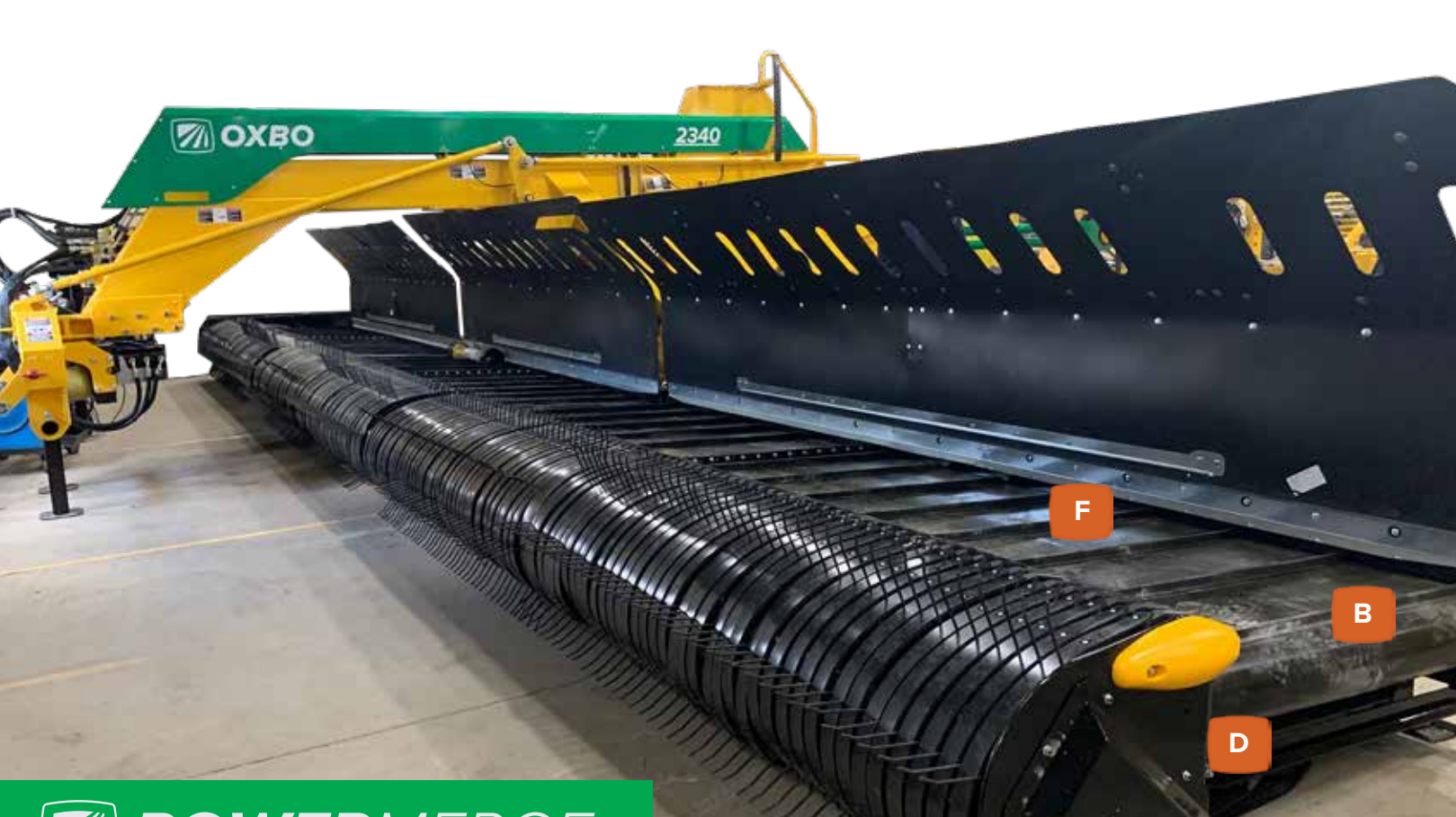
- Both the Oxbo 2334 and 2340 are equipped with an auto-lube system
- Auto-lube system improves component life and reduces maintenance costs
- The pump placement allows for easy filling and monitoring



CUSTOMIZE FOR YOUR OPERATION

- Spare PTO storage behind the side access panel
- All mergers come standard with a 1-3/8 and 1-3/4 PTO





POWERMERGE

- A** Industry leading cam technology
- B** 40-inch conveyor with improved belt seals
- C** Positive belt drive motors
- D** Belt runs without added tensioners
- E** 2-inch spaced rubber mounted tines
- F** Optimized belt angle



BETTER WINDROWS, BETTER FEED QUALITY

- PowerMerge technology was designed to increase merger productivity while reducing cost of ownership
- PowerMerge creates smooth, industry leading windrows, with lower ash, across crop types: from dry hay to silage and small grains

INNOVATIVE FLOAT SYSTEM

- Both the Oxbo 2334 and 2340 utilize an innovative float system featuring a nitrogen filled accumulator assist and a dedicated set of cylinders
- The float system and wide stance, smooth ride shoes deliver smooth following and superior crop pick up, no matter the ground conditions



INDUSTRY LEADING CAM TECHNOLOGY

- Oxbo has optimized the cam design to deliver better performance
- Tines lift crop when they are at their slowest point -- this eliminates crop rolling in front of the pick up, retaining more leaves
- Tines release crop at their fastest point -- retaining more leaves

NEW DESIGN FURTHER REDUCES MAINTENANCE

- Oxbo mergers was designed with straightforward, robust electronics: customers who want to work on their own mergers, can.
- Belts run without tensioners, reducing maintenance cost
- Improved belts seals and long belt life reduce cost of ownership





A FULL FAMILY OF MERGERS

With single, twin and triple mergers, there is an Oxbow merger for every forage operation.

For over 20 years, Oxbow forage mergers have been leading the industry in continuous merging technology. Supported by local dealers and backed by Oxbow's commitment to service and support for our dealers and end users, Oxbow customers are supported, 100%.

Over the decades, we have become experts in merging. **We understand that the nutrient content of our forage and consistency of our windrows create real, measurable differences in chopping and baling speeds, in feed quality, and in milk production.**



2114 SINGLE MERGER

- Single head merger, lower-cost, easy to fit in any field
- 14-feet of crop merged per pass
- All the benefits of merging, pulled behind a 70hp tractor



2228 TWIN MERGER

- Capable of merging left, right and center
- Up to 33-feet of crop merged per pass
- Compatible with self-propelled windrowers and triple mowers



2334 & 2340 TRIPLE MERGER

- Capable of merging left or right
- Massive 40-feet of crop merged per pass with the 2340 or 34-feet with the 2334
- Designed to cover thousands of acres per season

SPECIFICATIONS

Dimensions	2334	2340
Transport width	10ft 2.5in (3.11m)	11ft 11in (3.63m)
Actual width	33ft 9in (10.3m)	40ft (12.19m)
Transport length	25ft 11.1in (7.9m)	28ft 10in (8.79m)
Working length	22ft 9.75in (7.0m)	23ft 2.75in (7.08m)
Transport height	10ft 9in (3.28m)	11ft 7in (3.53m)
Working height	8ft 3in (2.51m)	8ft 3in (2.51m)
Weight	17,060 lbs (7,738 kg)	18,040 lbs (8,183 kg)
Hitch weight - folded	5,040 lbs (2,286 kg)	4,560 lbs (2,068 kg)
Pickup		
Conveyor length	1, 10ft (3.1m); 2, 12ft (3.66m)	1, 12ft (3.66m); 2, 14ft (4.27m)
Conveyor belt width	40" (1.0m)	40" (1.0m)
Strippers	Poly	
Rubber mounted teeth	Split tines with 2" spacing	
Tractor Requirements		
Tractor size	135hp minimum (100 kW)	150hp minimum (111.86 kW)
3-point hitch	Cat III, or IV hitches	
PTO	1000 RPM (choice of type 2 or type 3 PTO)	
Tractor remote couplers	2 sets (Requires closed center or load sensing hydraulic system*)	
General		
Controls	ISOBUS standard, Control Box 602224 optional	
Oil reservoir capacity	90 gal (341L)	
Max transport speed	20mph (32.2km/hr)	
Operating speed	2-12mph (3-19km/hr)	
Tire size	480/55R22.5	

Load Sensing now standard equipment.

*Tractors with load sensing hydraulics may require an optional kit. Contact your dealer or territory manager for information.

U.S. Patents: 6,205,757; 6,935,488; 7,070,042; 7,310,929; 7,418,811; 7,628,004; 7,673,439; 7,823,371; 7,827,774; 8,091,331; 8,166,739; 8,186,138; 8,312,700; 8,402,730; 8,511,052; 8,863,488; 9,198,357.



Visit our website
oxbo.com

