

## ***MULTI-FUNCTION GRAPE HARVESTER***



**6030**

**GRAPES**



# OXBO 6030



## 6030

### ***MULTI-FUNCTION GRAPE HARVESTER***

The new Oxbo 6030 multi-function grape harvester brings powerful performance, tight turning, and flexible operation to the vineyard market. With the 6030, you have the choice of removing the picking unit and using the power unit to spray or perform other vineyard tasks or using it as a dedicated harvester—whichever best fits your business needs. The operator is always positioned over the top of the vines for the best visibility and the harvester was designed to deliver the highest quality grapes.

With a powerful ground drive system, road speeds of over 20mph, and integrated technology, the 6030 was designed to deliver efficiency in the vineyard.

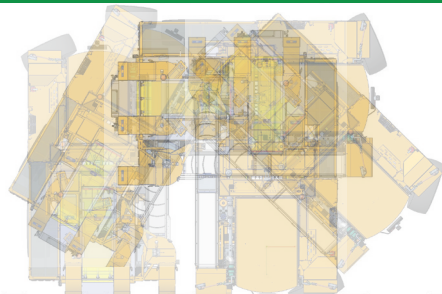




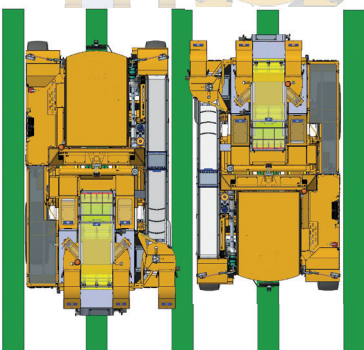
## UNIQUE FEATURES

- ✓ Independent power unit with removable picking unit
- ✓ Designed for performance and stability in challenging ground conditions
- ✓ Tight turning radius- compatible with 18 foot headlands
- ✓ Center mounted cab for increased driver visibility
- ✓ Integrated technology and easy to use, multi-lingual diagnostics
- ✓ Power unit available with the 640 vineyard sprayer attachment

Headland



18 ft.



6 ft.





# OXBO FEATURES

Oxbo backs all of its harvesters with decades of experience building and supporting niche market harvesting solutions. With dealers and service providers around the globe, Oxbo stands behind its equipment with readily available parts and in-field service support.



## HIGH FRUIT RETENTION

The unique construction of Oxbo catchers **provide long life in the field**, with either standard spring and rockers or narrower, swept back torsion blocks catchers.



## HIGH CAPACITY BUCKETS

Oxbo buckets are designed to carry your fruit, not drag it and retain free run juice, **capturing more of your harvest and maintaining fruit integrity.**



## EASY TO USE CONTROLS

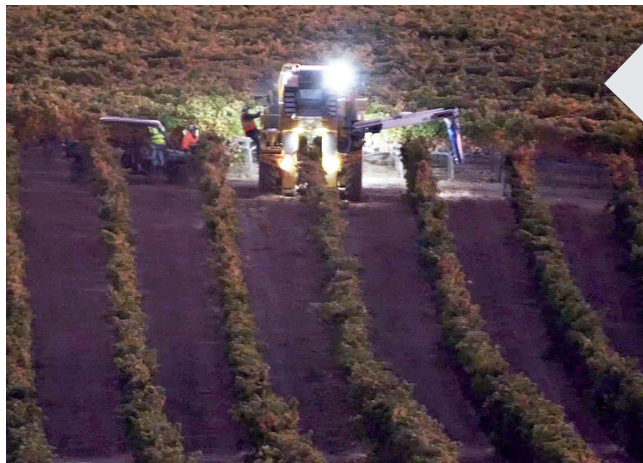
All Oxbo harvesters are equipped with easy-to-use controls, matched with **simple icons and a multi-lingual display**, which includes diagnostics.



## FRUIT CLEANING OPTIONS

Available with **standard three fan cleaning** proven effective at removing MOG, **PremiumDestem** onboard cluster destemming, or **PremiumSort** onboard destemming and sorting.





## ✓ **POWERFUL GROUND DRIVE SYSTEM**

The 6030 features a powerful ground drive system with built in traction control which was designed to handle the challenging ground conditions and steep terrain found in many vineyards. The 6030 features 26-inches of side to side leveling giving it smooth performance, even in side hills or terraced vineyards. With a maximum road speed of over 20mph, the 6030 can quickly move between blocks, minimizing the time spent in transport.



## ✓ **CENTER MOUNTED CAB**

The center mounted cab on the Oxbo 6030 gives the operator a clear view over the top of the vines. Easy to use, bi-lingual controls with built-in diagnostics and an enhanced joystick make the 6030 simple to operate.



## ✓ **FULL LED LIGHT PACKAGE**

The new 6030 features powerful LED lights positioned across the power unit and the harvester unit to deliver unsurpassed visibility in night vineyard operations.

## ✓ **LARGE PICKING TUNNEL**

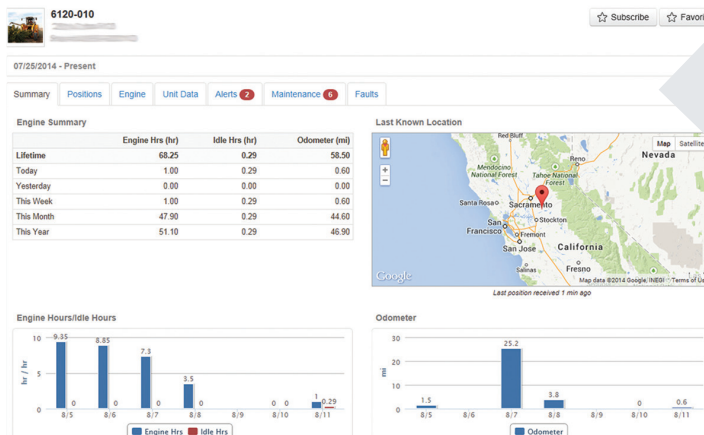
The 6030 features the industry's widest picking tunnel. The 30-inch tunnel allows the 6030 to accommodate the widest range of trellis systems- from VSP to a variety of cross arms.





**PremiumSort** provides the highest quality fruit. In addition to the three fan cleaning and onboard destemming, PremiumSort also includes a petiole belt that removes petioles and other small debris from the fruit load.

**Both systems are designed with a simple by-pass, capable of high capacity and easy to operate.**



With the integration of FleetCommand, Oxbo provides you with the information needed to optimize your fleet of grape or olive harvesters. **FleetCommand gives machine owners and managers remote access to near real-time harvester data**, such as: location with directions to machines increasing serviceability, engine working and idle hours, acre counter, maintenance logs and more.



These maps can lead to actionable insights, which can be used to positively impact vineyard operations. The same display can be used for variable rate application and as-applied maps.

Oxbo also offers a retro-fit kit for existing machines.





# 640 SPRAYER



## 640

The Oxbo 640 Multi-Row sprayer extends the use of the 6030 power unit. With the ability to install or remove from the power unit in under 30 minutes, the 640 delivers new technology and efficiency to the vineyard.

The Oxbo 640 offers two product tank options, the standard 600 gallon tank or an **industry leading 900 gallon tank**. The 640 comes standard with a 50 gallon rinse tank and each row is controlled by an independent fan for more control over product application. The 640 sprayer utilizes proven Gearmore Venturi product delivery drops, complete with a breakaway feature to protect nozzles.

### FEATURES

- ✓ 3- or 4-row sprayer
- ✓ Four fans for increased canopy movement
- ✓ Fully integrated, **easy to use controls**
- ✓ Independent row unit control
- ✓ Quickly adjustable for 6-10' rows
- ✓ Onboard chemical eductor for easy filling
- ✓ Excellent visibility from center mounted cab
- ✓ Outer booms lift over 9 feet





## SPECIFICATIONS

Dimensions (with picking unit)	
Length	18 ft 5 in (5.61 m)
Width	10 ft (3.05 m)
Tunnel width	2 ft 6 in (0.76 m)
Minimum height	12 ft 6 in (3.81m)
Lift	26 in (0.66 m)
Weight	24,600 lbs (11,158 kg)
Tires	
Engine model	440/65R24
Horsepower	19.5-24
Engine	
Engine	CAT® turbo charged, Tier 4F
Other Specifications	
Transmission	Danfoss H1 tandem
Final Drives	Fairfield
Hydraulics	Danfoss 147cc pump



Oxbo International  
270 Birch Bay Lynden Rd.  
Lynden, WA 98264

Visit our website at  
**oxbo.com**



**360.354.1500**

**888.656.7826**