

GRAPE HARVESTER



620

620 | **GRAPE HARVESTER**

The 620 is a tow behind grape harvester capable of harvesting a wide range of trellising. High capacity, capable of hill climbing, high quality fruit and available with integrated technology, the 620 can be customized to fit a wide range of vineyards.



FEATURES

The tow behind Oxbo 620 offers a full range of features and can be customized for a wide range of vineyards.

BOW ROD SHAKING SYSTEM

- Soft-touch bow rod picking system thoroughly removes fruit without canopy damage
- Full customization with three different style picking rods: general, extended contact, and heavy duty
- Adjustable to harvest a wide range of trellis systems and grape varieties throughout the season



620 FEATURES

- Maintenance platforms plus easy access to all major service points
- Requires a 100hp tractor with 1000rpm PTO
- Full range of hitch movement for easy maneuvering during turns
- Overall width easily fits 6-foot row spacing





- ✓ Features the same, full sized tunnel as the multi-function 6030
- ✓ Able to harvest a wide range of trellises including high wire and cross posts up to 12"
- ✓ Reliable, long life nylon catchers with either torsion block or springs and rockers



- ✓ Proven bucket conveyance system maintains fruit integrity and retains all juice
- ✓ High capacity buckets can handle any tonnage
- ✓ Catching length allows for fast harvest speeds



IN-CAB CONTROLS



EASY-TO-OPERATE TOW BEHIND

- ✓ The 620 features advanced yet easy to use in-cab controls
- ✓ The total control joystick gives the driver easy harvester function and hitch control
- ✓ The large color display is common with the full range of Oxbo grape harvesters and allows for speed adjustment and bi-lingual diagnostics
- ✓ All controls are mounted to allow the driver to turn and see the harvester while making adjustments



620 CLEANING SYSTEMS



THREE FAN CLEANING

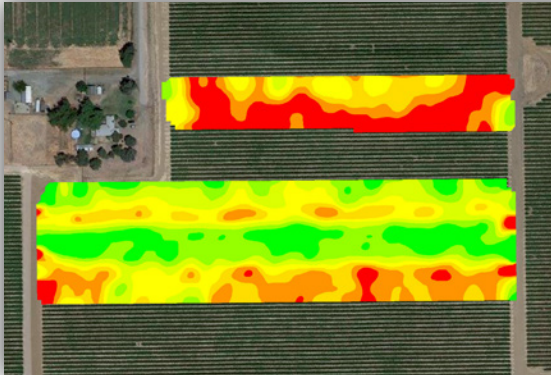
Oxbo's industry-leading three fan cleaning system continues to set the standard for MOG removal. The fan system has proven most effective at removing debris and MOG at three unique fruit transition areas. Cleaning the grapes at these transition areas allows Oxbo fans to remove leaves and other debris while maintaining fruit integrity.



PREMIUMDestem

PremiumDestem pairs Oxbo's standard fan cleaning with the Oxbo destemmer to provide singulated fruit with extremely low MOG levels. Available with Oxbo's exclusive one-touch bypass system, this option delivers clean, whole fruit at high tonnages for customers looking to remove rachis and other MOG but not for fine matter sorting.

TECHNOLOGY



YIELDTracker

Oxbo YieldTracker allows customers to produce yield maps to gain insight on yield distribution throughout the vineyard or orchard. These maps can lead to actionable insights, which can be used to positively impact vineyard operations. The same display can be used for variable rate application and as-applied maps.

AUTOSteer

Available with Oxbo's rocker and spring catcher system, the auto-steer system features several proximity sensors built into the catcher plate design. These sensors keep the tow behind centered on the vine, reducing driver fatigue in the field.

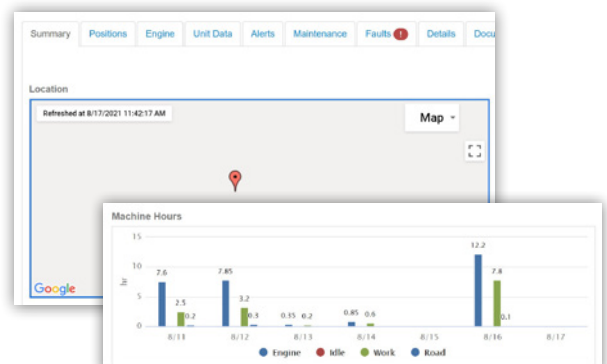


WHEELAssist

Oxbo's wheel assist option is available on the model 620 to enable reliable performance in steep vineyards. Wheel Assist features powered hubs on the tow behind to push the harvester up steep grades or control it down steep grades. The system works automatically but can be switched into manual mode as well.

FLEETCommand

With the integration of FleetCommand, Oxbo provides you with the information needed to optimize your fleet of grape or olive harvesters. FleetCommand gives machine owners and managers remote access to near real-time harvester data such as: location with directions to machines increasing serviceability, working hours, acre counter, maintenance logs and more.



OPTIONS

THE OXBO 620 CAN BE EXTENSIVELY CUSTOMIZABLE

- ✓ Three-camera kit
- ✓ Right over-the-row conveyor
- ✓ Gondola and trailer discharge chutes
- ✓ Dual on-board storage bins
- ✓ Quick hitch stand design





OXBO 620

NEW

- Economical tow-behind with full technology package available
- Available wheel assist for performance in challenging grades
- 100hp or greater tractor
- Standard fan cleaning or PremiumDestem



OXBO 3130

- Maneuverable, tight turning, dedicated harvester
- Improved functions display, including wash mode
- High capacity, 16-inch bucket conveyance
- Configurable with a single Over The Row Conveyor (OTRC) for grapes and double OTRC for raisins
- Now available with FleetCommand telematics and/or YieldTracker options



OXBO 6030

NEW

- Multi-function power unit with removable picking unit
- ECO Mode for increased fuel efficiency
- High performance ground drive for challenging terrain and road speed
- Center mounted cab for industry leading visibility
- Available with PremiumDestem or PremiumSort cleaning



OXBO 6230

- Wide-tunnel harvester with trunk shaking or the Force Balanced Canopy Shaker (FBCS) picking system
- ECO Mode for increased fuel efficiency
- Configurable cleaning: PremiumSort or PremiumDestem
- Easy-to-use bilingual controls and on-board diagnostics
- Standard and high performance ground drive available



OXBO 6430

- Large picking tunnel
- Capable of picking multiple crops including: grapes, Super High Density (SHD) olives, and almonds
- Configurable discharge options, including recycle bin
- Standard and high performance ground drive available
- Center mounted cab for industry leading visibility
- Easy-to-use bilingual controls and on-board diagnostics

SPECIFICATIONS

	620	3130	6030	6230	6430
Dimensions					
Length	19ft 9in 6.02m	16ft 11in 5.16m	18ft 5in 5.61m	21ft 6.4m	
Width	10ft 3.05m	10ft 3.05m	10ft 3.05m	11ft 11in 3.63m	
Tunnel width	2ft 8in 0.81m	2ft 6in 0.76m	2ft 6in 0.76m	4ft 6in 1.37m	
Minimum operating height	12ft 6in* 3.96m	11ft 9in 3.58m	12ft 6in* 3.81m	12ft 10in* 3.91m	14ft 2in 4.32m
Lift	24in 0.61m	24in 0.61m	26in 0.66m	30in 0.76m	
Weight	14,000lbs 6,350kg	15,000lbs 6,800kg	24,600lbs 11,158kg	23,500lbs 10,700kg	26,000lbs 11,800kg
Tires					
Front tire size	N/A	360/70R20	440/65R24	440/65R24	
Rear tire size	440/65R25	420/70R28	19.5-24	19.5LR24	
Optional rear tires	N/A	N/A	N/A	600/55-26.5	
Engine					
Engine	N/A	Kohler® turbo diesel Tier 4F	CAT® turbo charged Tier 4F		
Other Specifications					
Transmission / Wheel Assist	Danfoss K2 series	Danfoss 46 series	Danfoss H1 tandem		
Final drives	Fairfield	Auburn	Fairfield	Auburn	
Hydraulics	Dual Danfoss 60cc pumps	Danfoss 75cc pump	Danfoss 147cc pump		

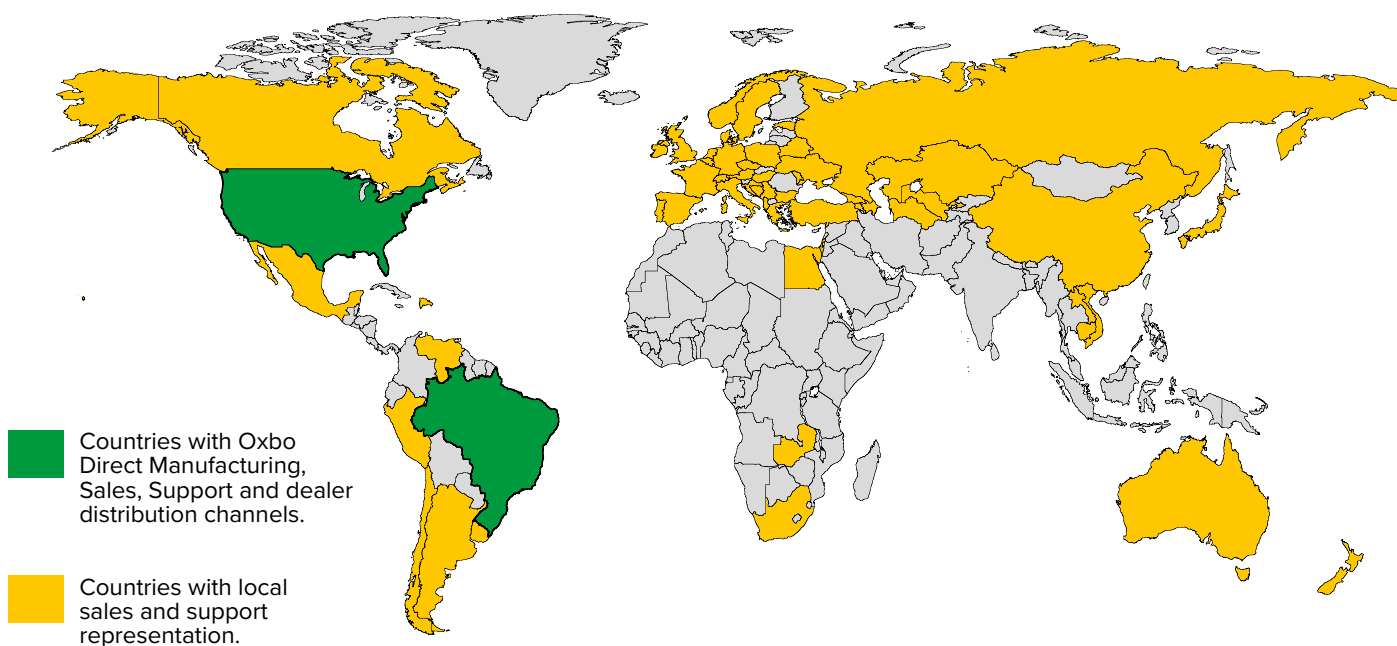
*Model available with PremiumSort or PremiumDestem option, which adds to overall height.



OXBO COMPANY LOCATIONS

Manufacturing, New York	Manufacturing, Wisconsin	Manufacturing, Washington	Manufacturing, Brazil
7275 Byron Rd. Byron, NY 14422 585.548.2665	100 Bean St. Clear Lake, WI 54005 715.263.2112	270 Birch Bay Lynden Rd. Lynden, WA 98264 360.354.1500	Av. Saturnino de Brito, 1229 Cruz Alta - RS 55.3322.8516
Sales & Service, Indiana	Sales & Service, Iowa	Sales & Service, Iowa	Sales & Service, Illinois
10605 W 750 N Shipshewana, IN 46565 260.768.3217	23645 Diagonal Rd. Grundy Center, IA 50638 319.824.5241	935 W. Hwy 30 Lisbon, IA 52253 319.455.2346	8887 Hwy 251 South Rochelle, IL 61068 815.561.3030
Sales & Service, Washington	Sales & Service, California	Sales & Service, Brazil	Sales & Service, Brazil
815 N Oregon Ave Pasco, WA 99301 509.544.0362	10825 W. Goshen Avenue Visalia, CA 93291 559.897.7012	Quadra 23, Lote 15/16 Aparecida de Goiânia - GO 62.3518.8585	Av. Pres. Tancredo Neves, 150 Patos de Minas - MG 34.3821.4368

OXBO GLOBAL REACH



Oxbo International
270 Birch Bay Lynden Road
Lynden, WA 98264

Visit our website at
oxbo.com



360.354.1500

888.656.7826