

GRAPE HARVESTERS



620, 3130, 6030, 6230, & 6430

A COMPLETE FAMILY OF SOLUTIONS



OXBO GRAPE HARVESTERS

The Oxbo vineyard family offers a complete line of grape harvesters with a model for every vineyard. Oxbo grape harvesters--proudly built in the USA--are designed and manufactured in a state of the art production facility in Lynden, Washington, where machines are built to customer specifications.

BUILDING ON A LEGACY

Today's Oxbo grape harvesters consistently deliver high quality fruit without sacrificing in-field productivity. Oxbo's vineyard line is built by an organization big enough to drive innovation and small enough to build relationships. By listening to its growers, customers, and dealers, Oxbo strives to improve and build new solutions.

BACKED BY PRODUCT SUPPORT

Oxbo backs all of its harvesters with decades of experience building and supporting niche market harvesting solutions. With dealers and service providers around the globe, Oxbo stands behind its equipment with readily available parts and in-field service support.

FULL PRODUCT FAMILY

Oxbo offers a comprehensive line of vineyard harvesters with models and options available for every vineyard. With a dedication to fruit quality, Oxbo grape harvesters set the standard in productivity and serviceability.



OXBO 620

NEW

- Economical tow-behind with full technology package available
- Available wheel assist for performance in challenging grades
- 100hp or greater tractor
- Standard fan cleaning or PremiumDestem



OXBO 3130

- Maneuverable, tight turning, dedicated harvester
- Improved functions display, including wash mode
- High capacity, 16-inch bucket conveyance
- Configurable with a single Over The Row Conveyor (OTRC) for grapes and double OTRC for raisins
- Now available with FleetCommand telematics and/or YieldTracker options



OXBO 6030

NEW

- Multi-function power unit with removable picking unit
- ECO Mode for increased fuel efficiency
- High performance ground drive for challenging terrain and road speed
- Center mounted cab for industry leading visibility
- Available with PremiumDestem or PremiumSort cleaning



OXBO 6230

- Wide-tunnel harvester with trunk shaking or the Force Balanced Canopy Shaker (FBCS) picking system
- ECO Mode for increased fuel efficiency
- Configurable cleaning: PremiumSort or PremiumDestem
- Easy-to-use bilingual controls and on-board diagnostics
- Standard and high performance ground drive available



OXBO 6430

- Large picking tunnel
- Capable of picking multiple crops including: grapes, Super High Density (SHD) olives, and almonds
- Configurable discharge options, including recycle bin
- Standard and high performance ground drive available
- Center mounted cab for industry leading visibility
- Easy-to-use bilingual controls and on-board diagnostics

✓ **THREE FAN CLEANING SYSTEM**

Oxbo's industry-leading three fan cleaning system continues to **set the standard for MOG removal.**

The fan system has proven most effective at removing debris and MOG at three unique fruit transition areas. Cleaning the grapes at these transition areas allows Oxbo fans to remove leaves and other debris while maintaining fruit integrity.



✓ **ADVANCED VINTAGE TECHNOLOGY**

Oxbo's Advanced Vintage Technology (AVT) system is integrated into every model **to ensure fruit integrity and provide wine control.** Each aspect of the AVT system works together **to deliver more intact, clean fruit to the end sample without sacrificing in-field harvesting productivity.** Oxbo harvested fruit gives the wine maker more control of the wine making process.



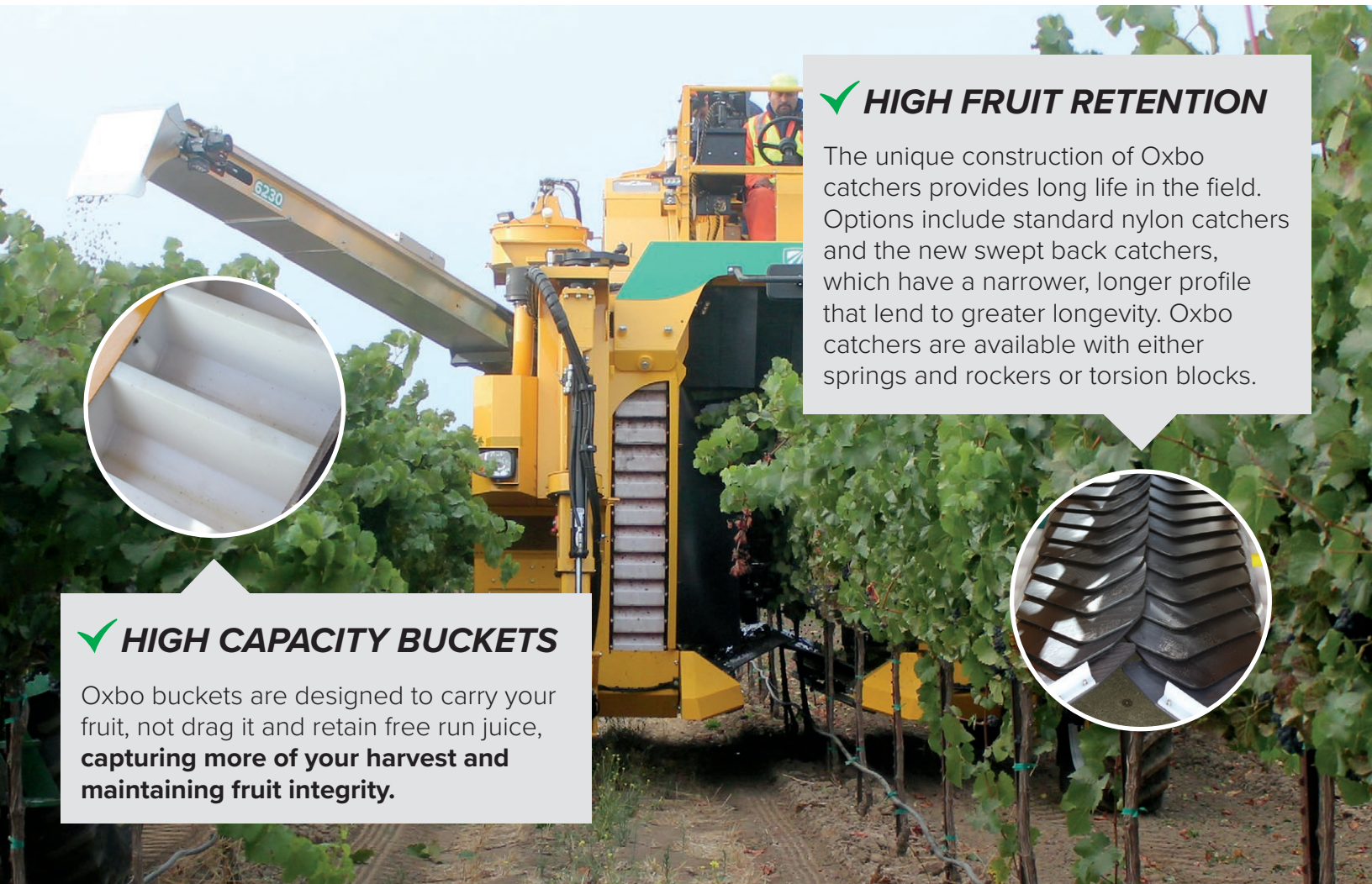
✓ **HIGH FRUIT RETENTION**

The unique construction of Oxbo catchers provides long life in the field. Options include standard nylon catchers and the new swept back catchers, which have a narrower, longer profile that lend to greater longevity. Oxbo catchers are available with either springs and rockers or torsion blocks.



✓ **HIGH CAPACITY BUCKETS**

Oxbo buckets are designed to carry your fruit, not drag it and retain free run juice, **capturing more of your harvest and maintaining fruit integrity.**



✓ CUSTOMIZABLE DISCHARGE OPTIONS

Oxbo harvesters offer a range of fruit discharge options. Options include a single over-the-row conveyor (OTRC), double OTRC, on-board storage bins, or a combination of left and right side options.

✓ CENTER MOUNTED CAB

Oxbo's air conditioned cab sits directly over the picking tunnel, which gives the operator a clear view of the canopy.

✓ OTHER KEY FEATURES

- Designed and built in the USA
- Leading ground drive technology for gradeability
- Easy-to-use controls with multi-lingual diagnostics
- Backed by local parts and support

✓ PICKING HEAD OPTIONS

Oxbo's **soft-touch bow rod picking system**, available on the 6030, 3130, 316XL, and 6430, was **designed for minimal canopy impact** and can be customized with various picking rods. Available on the 6230, the **Oxbo trunk shaker removes fruit by shaking the trunk** and functions in a wide range of trellis systems. The trunk shaker head can further increase its versatility with the **Force Balanced Canopy Shaker (FBCS)**, which uses rods to shake the canopy.



TRUNK SHAKER WITH HELPER RODS



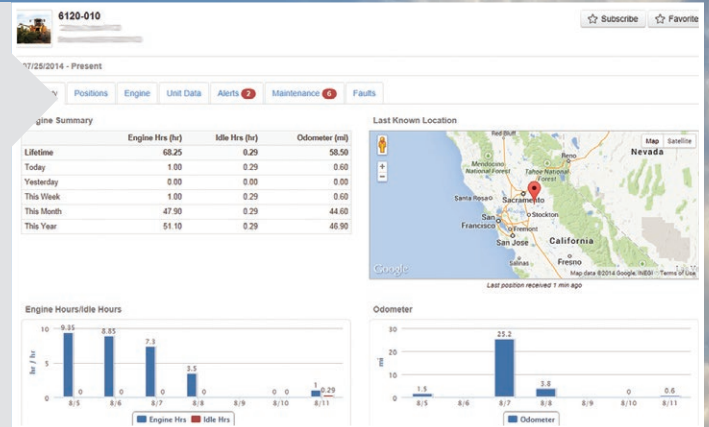
FORCE BALANCED CANOPY SHAKER



FLEETCommand

With the integration of FleetCommand on the 6030, 6230, and 6430 harvesters, Oxbo provides you with the information needed to optimize your fleet of grape or olive harvesters. **FleetCommand gives machine owners and managers remote access to near real-time harvester data.**

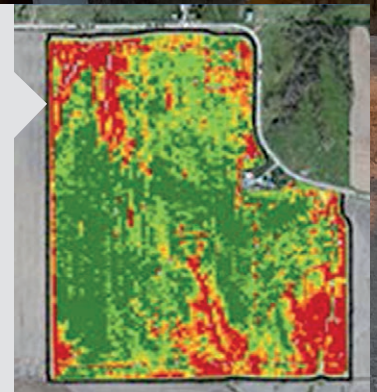
Now optional on the 3130 model.



YIELDTracker

Oxbo YieldTracker is now available on all Oxbo grape and olive harvesters. **YieldTracker allows customers to produce yield maps to gain insight on yield distribution throughout the vineyard or orchard.** These maps can lead to actionable insights, which can be used to positively impact vineyard operations. The same display can be used for variable rate application and as-applied maps.

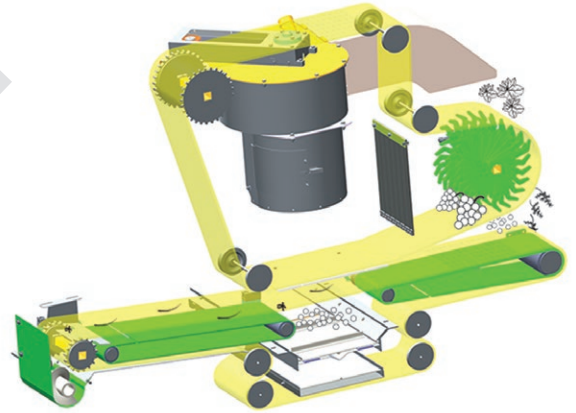
Oxbo also offers a retro-fit kit for existing machines.





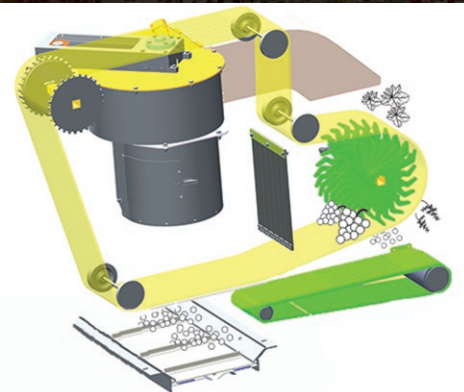
PREMIUMSort

Available on the 6030 and 6230, the PremiumSort system delivers the highest quality fruit. PremiumSort features multiple cleaning stages: Oxbo's standard fan cleaning removes leaves, the destemmer separates grapes from the rachis, and the petiole belt removes petioles and small debris. **This system has been designed with a simple by-pass, capable of high capacity, easy operation, and the ability to deliver straight-to-tank quality fruit.**



PREMIUMDestem

Newly available on the Oxbo 6030 and the 6230, the new PremiumDestem system offers a destem-only cleaning option. This system pairs Oxbo's standard fan cleaning with the Oxbo destemmer to provide singulated fruit with extremely low MOG levels. **Available with Oxbo's simple by-pass system, this option delivers clean fruit, at high tonnages for customers wanting to remove the rachis, and other MOG, but not looking for fine-matter sorting.**



OXBO 6030



6030

MULTI-FUNCTION GRAPE HARVESTER

The new Oxbo 6030 multi-function grape harvester brings powerful performance, tight turning, and flexible operation to the vineyard market. With the 6030, you have the choice of removing the picking unit and using the power unit to spray or perform other vineyard tasks or using it as a dedicated harvester—whichever best fits your business needs. The operator is always positioned over the top of the vines for the best visibility and the harvester was designed to deliver the highest quality grapes.

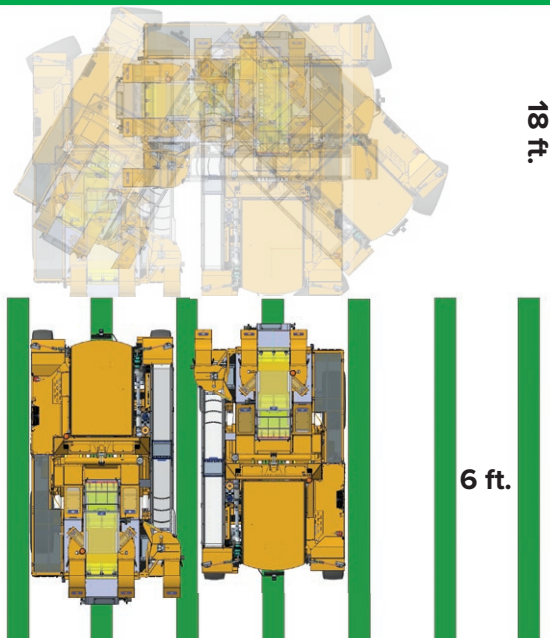
With a powerful ground drive system, road speeds of over 20mph, and integrated technology, the 6030 was designed to deliver efficiency in the vineyard.



UNIQUE FEATURES

- A** Independent power unit with removable picking unit
- B** Designed for performance and stability in challenging ground conditions
- C** Tight turning radius- compatible with 18 foot headlands
- D** Center mounted cab for increased driver visibility
- E** Integrated technology and easy to use, multi-lingual diagnostics
- F** Power unit available with the new 640 vineyard sprayer attachment

Headland





✓ **POWERFUL GROUND DRIVE SYSTEM**

The 6030 features a powerful ground drive system with built in traction control which was designed to handle the challenging ground conditions and steep terrain found in many vineyards. The 6030 features 26-inches of side to side leveling giving it smooth performance, even in side hills or terraced vineyards. With a maximum road speed of over 20mph, the 6030 can quickly move between blocks, minimizing the time spent in transport.



✓ **CENTER MOUNTED CAB**

The center mounted cab on the Oxbo 6030 gives the operator a clear view over the top of the vines. Easy to use, bi-lingual controls with built-in diagnostics and an enhanced joystick make the 6030 simple to operate.



✓ **FULL LED LIGHT PACKAGE**

The new 6030 features powerful LED lights positioned across the power unit and the harvester unit to deliver unsurpassed visibility in night vineyard operations.

✓ **LARGE PICKING TUNNEL**

The 6030 features the industry's widest picking tunnel. The 30-inch tunnel allows the 6030 to accommodate the widest range of trellis systems- from VSP to a variety of cross arms.

640 SPRAYER



640

The Oxbo 640 Multi-Row sprayer extends the use of the 6030 power unit. With the ability to install or remove from the power unit in under 30 minutes, the 640 delivers new technology and efficiency to the vineyard.

The Oxbo 640 offers two product tank options, the standard 600 gallon tank or an **industry leading 900 gallon tank**. The 640 comes standard with a 50 gallon rinse tank and each row is controlled by an independent fan for more control over product application. The 640 sprayer utilizes proven Gearmore Venturi product delivery drops, complete with a breakaway feature to protect nozzles.

FEATURES

- ✓ 3- or 4-row sprayer
- ✓ Four fans for increased canopy movement
- ✓ Fully integrated, **easy to use controls**
- ✓ Independent row unit control
- ✓ Quickly adjustable for 6-10' rows
- ✓ Onboard chemical eductor for easy filling
- ✓ Excellent visibility from center mounted cab
- ✓ Outer booms lift over 9 feet



SPECIFICATIONS

	620	3130	6030	6230	6430
Dimensions					
Length	19ft 9in 6.02m	16ft 11in 5.16m	18ft 5in 5.61m	21ft 6.4m	
Width	10ft 3.05m	10ft 3.05m	10ft 3.05m	11ft 11in 3.63m	
Tunnel width	2ft 8in 0.81m	2ft 6in 0.76m	2ft 6in 0.76m	4ft 6in 1.37m	
Minimum operating height	12ft 6in* 3.96m	11ft 9in 3.58m	12ft 6in* 3.81m	12ft 10in* 3.91m	14ft 2in 4.32m
Lift	24in 0.61m	24in 0.61m	26in 0.66m	30in 0.76m	
Weight	14,000lbs 6,350kg	15,000lbs 6,800kg	24,600lbs 11,158kg	23,500lbs 10,700kg	26,000lbs 11,800kg
Tires					
Front tire size	N/A	360/70R20	440/65R24	440/65R24	
Rear tire size	440/65R25	420/70R28	19.5-24	19.5LR24	
Optional rear tires	N/A	N/A	N/A	600/55-26.5	
Engine					
Engine	N/A	Kohler® turbo diesel Tier 4F	CAT® turbo charged Tier 4F		
Other Specifications					
Transmission / Wheel Assist	Danfoss K2 series	Danfoss 46 series	Danfoss H1 tandem		
Final drives	Fairfield	Auburn	Fairfield	Auburn	
Hydraulics	Dual Danfoss 60cc pumps	Danfoss 75cc pump	Danfoss 147cc pump		

*Model available with PremiumSort or PremiumDestem option, which adds to overall height.



Oxbo International Corp.
270 Birch Bay Lynden Road
Lynden, WA 98264

Visit our website at
oxbo.com



360.354.1500

888.656.7826