

# ***DETASSELER***



**5175 & 5180**

# 5175 & 5180 | *DETASSELERS*

Oxbo has spent decades developing the best detassellers. With the 5175 & 5180 Oxbo offers a complete, reliable platform portfolio for global seed production.





## 5175 & 5180

**With decades supporting the seed corn industry, we understand the importance detasseling has on your business.**

For years, the 5180 has set the industry standard for productivity, comfort, safety, and accuracy contributing to higher levels of efficiency and higher yields for seed corn producers.

With the introduction of the 5175 as a localized Brazilian-built platform, **Oxbo offers a complete, reliable platform portfolio for global seed production.**

Oxbo continues to work with the seed corn industry to expand our portfolio of products. New features and functions of the 5180 and 5175 are coming soon designed to improve asset utilization of the platforms and spread the chassis cost over additional critical operations.

### **OXBO PREMIUM CAB**

Accurate detasseling is a critical function of seed corn production.

We understand the long hours you or your operators put in sitting in the cab of our equipment.

Both the 5175 and 5180 offer a premium cab experience, designed to improve comfort and reduce fatigue during long days in the field.

### **SETTING THE STANDARD IN DETASSELING**

Oxbo has spent decades in the field and in the cab with customers understanding detasseling and the needs of the seed corn industry.

The TS4 toolbar represents the most advanced cutting and pulling technology in the world and is common across both platforms. Designed for accuracy and to deliver high yields without reliance on hand labor, more seed producers trust their crop to the TS4.

The stability of the 5180 and 5175 combined with the **DetectorVision** height-accuracy of the TS4 cutters allows you to accurately set cut depth across your field maintaining more leaf to improve field yields.

## **EASY OPERATION**

It's easy to jump in the cab and go!

Both the 5175 and 5180 feature a large 12-inch display screen, customized to the detasseling operation with convenient touch screen functionality and easy-to-understand icons and data.

To support global seed corn production, screens can also quickly be changed between languages.



**Fast on the road.** Up to 25mph road transport speed.



**Faster in the field.** Up to 15 mph field speeds cutting and pulling.



Up to **97% pull rates**, even at top speeds.



Leaving more leaf plus consistent pull rates translates into higher yields per acre.

### **OXBO 5175**

Features a Tier III engine



### **OXBO 5180**

Features Tier IV Final / Stage 5 engine



## RELIABLE SUPPORT

We stand behind our equipment and our customers.

We know how important uptime and performance are to your business.

We are committed to partnering with you globally by providing dependable equipment, available parts, and world-class service support.



## COMMITTED TO SAFETY

The 5175 cab access meets NR31 regulations in Brazil and all the 5180 meets all ISO and ASABE safety requirements

The Oxbo 5180 is compliant across all global seed regions for lighting, markings, and general equipment safety in the field and on the road.

The tool bar folds in for easy road moves and a maximum road transport width of 3.5m.



### ✓ **DECTORVISION**

Accurate height Detector Vision system keeps your cutters and pullers at optimum height, even in wet conditions.

## INTEGRATED TECHNOLOGY

## TS4 TOOL BAR



### ✓ **FLEXIBLE CONFIGURATION**

NEW Quick Adjust Tool Bar allows more configuration changes, without tools, than ever before:

- Fully adjustable between 60-76cm row spacings.
- Change from 4:1, 4:2, 6:1 and 6:2 patterns
- Change from cutting to pulling in under 30 minutes

## STEER BY STALK

Optional steer-by-stalk keeps the chassis between rows. Oxbo's steery-by-stalk system:

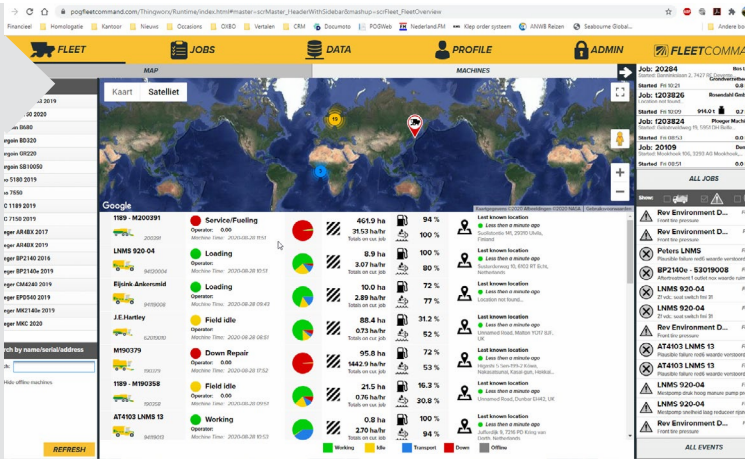
- Improves cutting and pulling accuracy
- Increases operation speeds
- Reduces driver fatigue



## FLEETCommand

Oxbo's integrated FleetCommand system uses data connectivity to provide fleet managers critical information to ensure application quality and productivity.

Information is available through a mobile app or through the web.



## SPECIFICATIONS

Dimensions	5175	5180
Length vehicle only (excludes toolbar)	23ft 2in (7.07m)	23in 2in (7.07m)
Length with tool bar	26ft (7.94m)	26ft (7.94m)
Width (vehicle only)	10ft 6in (3.20m)	10ft 6ft (3.20m)
Width (with folded tool bar)	10ft 6in (3.20m)	10ft 6in (3.20m)
Transport height	12ft (3.66m)	12ft (3.66m)
Max vehicle height (tool bar at max lift)	13ft (3960mm)	13ft (3960mm)
Track width adjustment: (CTR of wheel package)	90-118in (2.29-3.0m)	90-118in (2.29-3.0m)
Crop clearance	72in (1.83m)	72in (1.83m)
Turning diameter (varies by track & steering mode)	188-342.5in (4.8-8.7m)	188-342.5in (4.8-8.7m)
Weight		
Chassis only	18,750lbs (8500kg)	18,750lbs (8500kg)
Chassis (including toolbar)	22,000lbs (10000kg)	22,000lbs (10000kg)
Weight distribution	60/40 unfolded, 50/50 folded	60/40 unfolded, 50/50 folded
Tires		
Size	300/95R46	300/95R46
Recommended tire pressure	29/46psi (2.0/3.2bar)	29/46psi (2.0/3.2bar)
Powertrain		
Engine	Cummins QSB4.5 Tier III	John Deere Tier IV/Stage 5
Horsepower	127kW (170 hp @ 2400rpm)	129kW (173hp @2400rpm)
Ground Speeds		
Max road speed	25mph (40m/hr)	25mph (40m/hr)
Max field speed	15mph (24km/hr)	15mph (24km/hr)
Tank Capacities		
Fuel	130 gallons (500L)	130 gallons (500L)
Hydraulic fluid	105 gallons (400L)	105 gallons (400L)
DEF (AdBlue)	NA	5.5 gallons (20L)



OXBO.COM