

TWIN MERGER



CM240

CM240 | TWIN MERGER

The Oxbo CM240 twin merger delivers the ultimate in merger flexibility with the ability to merge 12,5m of crop into consistent windrows, merging to the left, right, or center.





CM240

DELIVERING THE HIGHEST QUALITY FORAGE

The CM240 is the newest Oxbo merger, building on Oxbo's commitment to forage quality for over 20 years. The twin CM240 merger is designed to open the benefits of merging up to new markets, including high quality grasses, alfalfa and small grains. The Oxbo CM240 features a robust design and reliable components to deliver long field life.

For years, Oxbo has made a commitment to designing mergers that deliver the highest quality forage. The new technology on the CM240 is designed to pick up a wide range of grass types and building smooth windrows across all crop types.

The new CM240 combines Oxbo's next generation pickup technology combining driven crop rollers in front of the small camless pick-up and a rotor designed to take the forage from the field and transition it in a controlled way onto the belt. The result: a fluffy and homogeneous windrow and higher quality forage due to less ash.

The Oxbo CM240 is designed to deliver better windrows and better forage quality.



Smooth windrows translate into reduced chopper fuel consumption, faster chopper speeds, and even knife wear.



Merging with the Oxbo CM240 with sloping pick-up tines and flexible pick-up for the best following of the field contour has proved to deliver high feed quality through lower ash content.



Oxbo pick up technology translates into the fastest merging speeds, even in high tonnage crops.



The CM240 allows you to merge the widest range of grass types, across the widest range of field conditions

✓ EASY OPERATION

Jump in and go!

The Oxbo CM240 is designed to be easy to operate from the first day of use.

The CM240 is ISOBUS ready and all screens and controls were built by experts in the forage merging business.

An optional ISOBUS terminal and joystick are available for customers running non ISOBUS tractors.



✓ MOVE BEYOND A RAKE

For years, the only way to productively windrow high quality grasses was with a rake. With the introduction of the high-capacity CM240, more forage operations can benefit from a merger than ever before.

Across crop types—grasses, alfalfa, and small grains—for baling or chopping, the CM240 delivers all the proven benefits of merging: increased chopping capacity, lower ash content and higher feed quality.

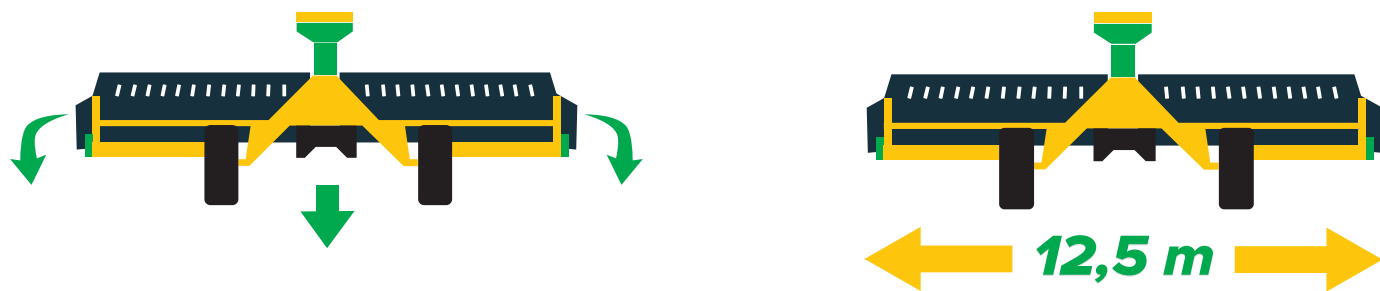




OXBO CM240

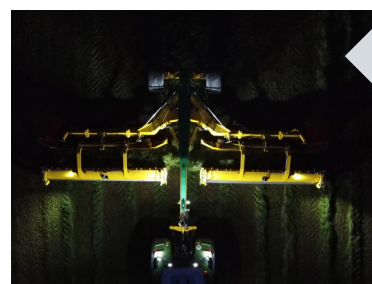


- A** Improved crop transition point smoothly transfers crop to the rear of the belt
- B** Pair of driven crop rollers reduces balling in front of the pick up
- C** Powered, integrated rotor keeps grasses flowing across the pick up head
- D** Belt handles high tonnage crops
- E** Flotation disks designed for long life and optimal field contour following



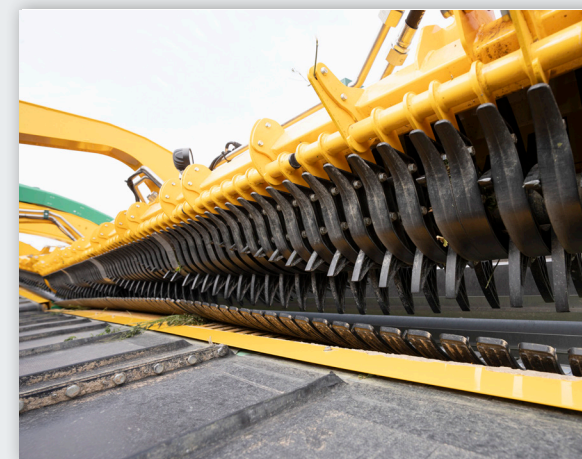
OPTIONAL AUTOLUBE SYSTEM

- Oxbo's optional automatic lubrication system improves component life and reduces maintenance costs.
- The quick access allows for easy filling and monitoring.



CONFIGURE THE CM240 TO YOUR NEEDS

- Standard 4 LED work lights with optional 4 additional work light package for full operational visibility, even at night
- Add the optional joystick and terminal for non-ISOBUS tractors or the joystick for easier use with the ISOBUS system

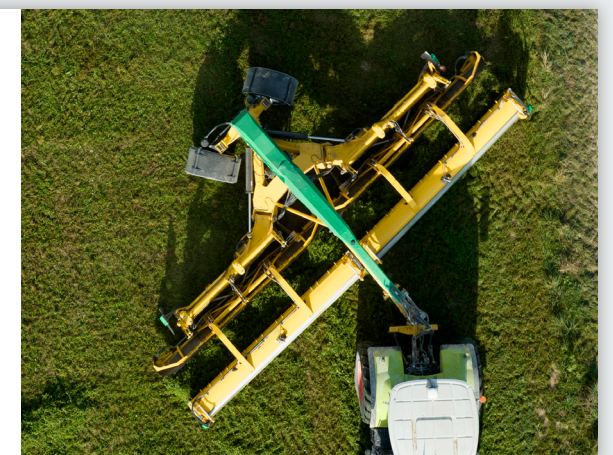


INDUSTRY LEADING PICK UP TECHNOLOGY

- Oxbo has optimized the crop transfer to deliver industry-leading performance, even in high tonnage grasses
- Trailed tines combined with a flexible pick-up, two powered crop rollers, and a throughput rotor keep forage from balling in front of the pick up heads, even in high tonnages or fast field speeds
- Designed to accommodate the full range of forage crop types

AUTOMATIC STEERING WITH MANUAL OVERRIDE

- The Oxbo CM240 twin merger features an automatic or manual steerable axle.
- Oxbo's steering makes it easy to get into field corners and clean out corners, to run the merger offset from the tractor (crabsteer) or to address other challenging field conditions and leave no valuable crop behind.
- The control units is sealed and is also moisture and weather resistant.



SPECIFICATIONS

Standard specifications	
Type	CM240 Twin Merger
Workingwidth	2x5.25m + 2m centerswath = 12.5m
Pick-up	
Pick-up	Flexible 3 piece pivoting
Pick-up diameter	345mm over tines
Pick-up type	Camless pick-up with 6 rows of tines
Pick-up tines	6mm trailed springtines
Depth-control	Hydraulic float control from the cab adjustable with 4 disc for field contour following
Crop rollers	Double driven aluminum crop rollers, suspended supports
Crop rotor	Active driven crop rotor above pick-up, hydraulic float and anti-wrappingsystem
Transport belt	1000mm wide rubber split belt, 25mm high flights, 450mm distance
Drive-system	On-board hydraulic drive for pick-up system and transport belts, LS-pump per header, cylinder functions via LS-system tractor, oiltank integrated in frame, 125 liter tank with suction- and returnfilter
Rear axle	Electro-hydraulic automatic steered rear axle with manual override
Tires	Standard 500/55-22.5, optional 600/55R22.5, optional fenders
Brakes	Air brakes or hydraulic. Spring booster park brake
Lightning	LED, roadlights and standard 4 or optional 8 worklights
Dimensions	
Lenght	8.8m
Width	3.0m
Height	3.65m
Weight	7.6 tons
Connection	
Connection	Hitch CAT 3 or 3N, PTO 1.3/8", 6-splines
PTO rpm	1000 or 1000E
Operation	Standard ISOBUS-terminal/joystick tractor, optional separate ISOBUS terminal/joystick
Benefits Oxbo CM240 merger	
CM240 merger	<ul style="list-style-type: none"> - Clean forage with low ash content due to trailed pick-up tines, flexible pick-up and minimal soilcontact - Floffy and loose homogenous swath for high harvest capacity - Optimal controlled cropflow and intake due to fully driven headersystem, CCF=Controlled Crop Flow - Perfect ground contour following due to flexible pick-up with big gliding discs and hydraulic float - Workingwidth per swath from 1 pick-up width till multi workingwidths per swath, depending on crop yield - Maximising harvest machines capacity due to right amount of kg/meter swathlenght and flexible swath-width - Extreme maneuverable due to electric-hydraulic steered rear axle - All controls via tractor ISOBUS terminal/joystick - Fixed adjustable or drive-speed depending control of pick-up rpm and beltspeed - Professional support and service by your Oxbo representative



Visit our website
oxbo.com